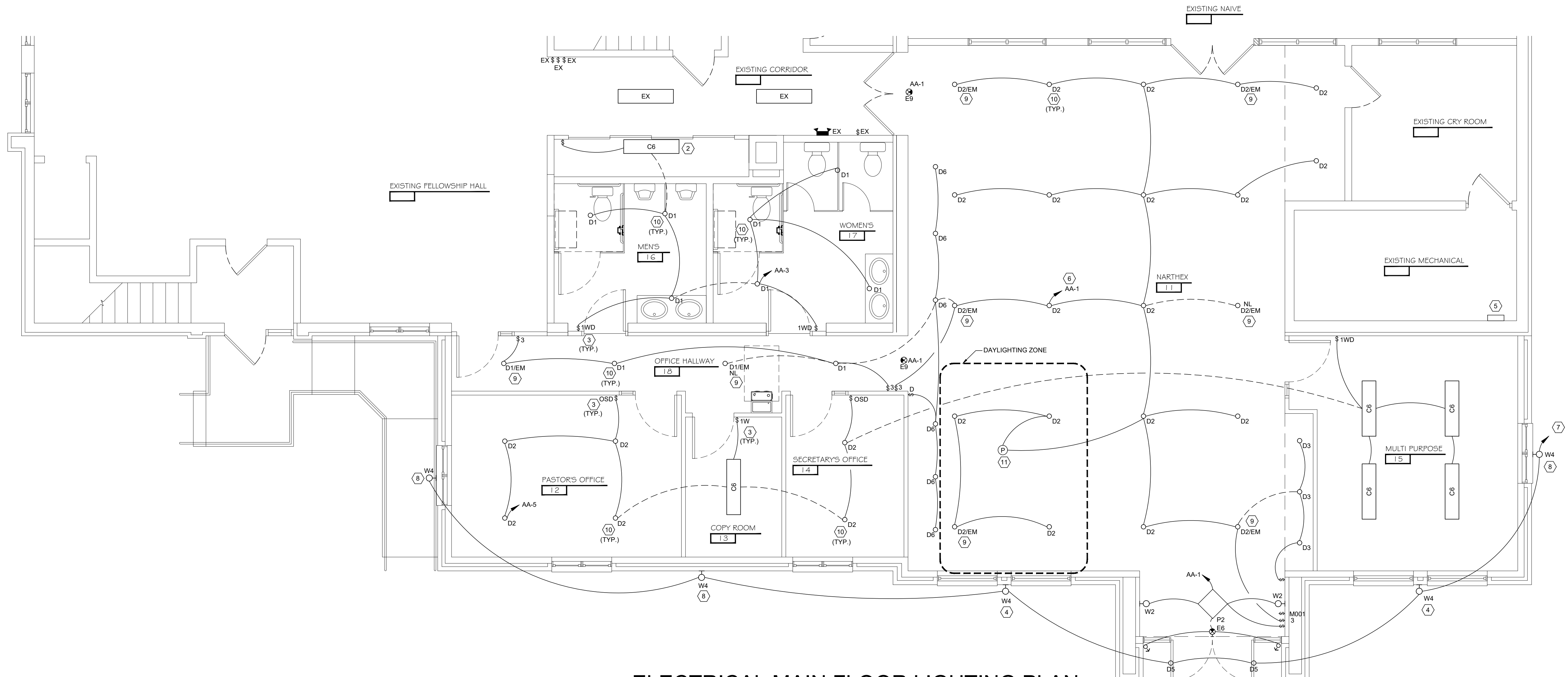


- GENERAL NOTES - LIGHTING**
1. REFERENCE ARCHITECTURAL SHEETS FOR APPLICABLE INTERIOR ELEVATIONS, SECTIONS, AND MISC. BUILDING INFORMATION REQUIRED TO COMPLETE THE ELECTRICAL INSTALLATIONS.
 2. SEE DETAIL 1/E700 FOR OCCUPANCY SENSOR WIRING AND SCHEDULE. WHERE OCCUPANCY SENSORS ARE INSTALLED IN AN AREA, CONNECT ALL LIGHTING IN THE AREA OF COVERAGE TO THE LOAD SIDE OF THE SENSOR POWER PACK. THE SENSOR ACTS AS AN OVERRIDE OF ALL SWITCHING IN THE AREA.
 3. ROUTE UN-SWITCHED CIRCUIT TO ALL FIXTURES WITH EMERGENCY BALLASTS IN ADDITION TO ANY SWITCHED CIRCUITS INDICATED. IF NO SWITCHED CIRCUIT IS INDICATED, CONNECT TO NEAREST LIGHTING CIRCUIT, AHEAD OF ALL SWITCHING. FIXTURES SHOWN WITH A DARKENED TRIANGLE, OR LABELED /EM, SHALL HAVE EMERGENCY BALLASTS INSTALLED, UNLESS NOTED OTHERWISE.
 4. ALL RECESSED FIXTURES WHICH PENETRATE THE BUILDING ENVELOPE (FROM A HEATED SPACE TO A NON HEATED SPACE) SHALL BE PROPERLY SEALED OR BOXED OUT TO ELIMINATE AIR PASSING THROUGH TO ANOTHER SPACE. THIS DOES NOT CHANGE THE REQUIREMENT TO MAINTAIN THE PROPER INSULATION RATING AS CALLED OUT IN THE CONTRACT DOCUMENTS.
 5. CONNECT EMERGENCY BATTERY UNITS AND EXIT SIGNS TO ADJACENT LIGHTING CIRCUIT AHEAD OF ALL SWITCHING.
 6. COORDINATE LOCATION OF ALL NIGHTLIGHTS WITH OWNER PRIOR TO ROUGH-IN. ROUTE ALL NIGHT LIGHTS AHEAD OF SWITCHING.

- PLAN NOTES - SHEET E200**
1. CONNECT TO EXISTING LIGHTING CIRCUIT IN THE ADJACENT ROOM.
 2. MOUNT FIXTURE ON WALL ABOVE DOOR.
 3. SEE DETAIL 1/E700 FOR OCCUPANCY SENSOR SCHEDULE AND WIRING DETAIL.
 4. MOUNT NOTED FIXTURE AT 10'-0" ABOVE GRADE TO CENTERLINE.
 5. NEW TIMECLOCK. SEE DETAIL 4/E700. WIRE TIMECLOCK POWER TO 120V CIRCUIT CURRENTLY CONTROLLING EXISTING TIMECLOCK.
 6. ROUTE NOTED CIRCUIT THROUGH TIMECLOCK.
 7. CONNECT NEW EXTERIOR LIGHTING TO EXISTING BUILDING MOUNTED EXTERIOR LIGHTING CIRCUIT AND WIRE THROUGH NEW TIMECLOCK.
 8. MOUNT NOTED FIXTURE AT 7'-10" ABOVE GRADE TO TOP OF FIXTURE (TIGHT TO SOFFIT).
 9. PROVIDE AN UNSWITCHED HOT CONDUCTOR TO NOTED FIXTURE FOR PROPER EMERGENCY BATTERY DRIVER OPERATION AND SWITCHING OF FIXTURE CAN BE ACCOMPLISHED AS SHOWN.
 10. PROVIDE TENMAT FF109 SERIES FIRE RATED COVER (OR EQUIVALENT) FOR EACH FIXTURE THAT PENETRATES THE RATED CEILING ASSEMBLY. INSTALL PER MANUFACTURER REQUIREMENTS.
 11. PROVIDE DIMMING PHOTO SENSOR THAT IS COMPATIBLE WITH ALL FIXTURES SHOWN TO BE CONTROLLED BY THE SENSOR. SET SENSORS TO START DIMMING FIXTURES WHEN LIGHT LEVELS ARE ABOVE 30 FOOTCANDLES.

ELECTRICAL BASEMENT FLOOR LIGHTING PLAN
SCALE: 1/4" = 1'-0"



ELECTRICAL MAIN FLOOR LIGHTING PLAN
SCALE: 1/4" = 1'-0"

Verify all existing site conditions
REVISIONS:

SHEET INDEX:
ELECTRICAL LIGHTING PLAN

Copyright © 2017
Idea House, Inc.
DRAWN: HLM APPRVD: HLM
May 2, 2017